

Monday 6th July

Good morning children in Rabbit, Squirrel and Hedgehog classes
Welcome to another Monday!!



Hope you have all had a lovely week and are ready for another week of home learning! Nearly there only 2 more weeks to go!!! Let's hope the weather improves this week!

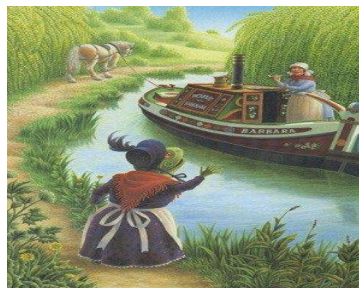
Please see the 'Monday' column on your home learning grid for today's Maths and English learning. Here are some reminders and tips to help you.

English- Chapter 2 Wind in the Willows - The Open Road

<https://www.bbc.co.uk/teach/school-radio/english-ks2-the-wind-in-the-willows-episode-2-the-open-road/zvjh2sg>

<https://www.youtube.com/watch?v=HeiR-9XRFVY>

Here are 4 types of transport that Toad has liked.



- First write a description of each one.
- Then write some sentences which compare them. Use connectives such as: and, but, however, because (Green level - 4 sentences, Orange – 5 , Red – at least 6)

Example

The boat is peaceful but the car gets somewhere much faster.

Phonics- The /l/ sound spelt –le, –el, –al or –il at the end of words

table apple bottle little animal petal usual camel towel model pencil pupil

There are lots more such as: **squirrel, nostril, angel, angle, circle, puzzle, giggle, parcel, label, final, metal, tremble, tunnel, fossil**

A helpful tip:

If the letter before the /l/ sound is a tall or long letter (bdfghjklpty) then the ending is normally –le.

If the letter before the /l/ sound is a small letter (acemnorsuvwxyz) then the ending is usually –el or –al.

However, there are exceptions! –il is a very unusual spelling of the /l/ sound.

Why don't you try a few words to see which words it works for

Spellzone Unit 26 -

https://www.spellzone.com/unit26/quest1_p3-4/index.cfm

<https://www.educationquizzes.com/ks1/english-spelling/year-2-ending-with-il/>

Maths - Fractions We did fractions earlier in the year. Today's learning is practical.

First we are going to go back over what we learnt before.

If I split a shape into 2 equal pieces then the 2 pieces are called halves or $\frac{1}{2}$ s.

If I split a circle into 4 equal pieces they are called $\frac{1}{4}$ s or quarters.

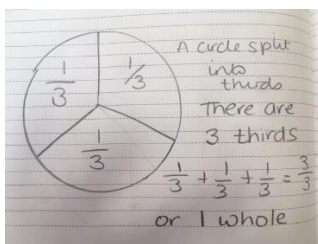
If I split a shape into 3 equal pieces then they are called $\frac{1}{3}$ s or thirds. (This is quite new learning.)

First cut slices of bread into halves and quarters.

You could find other things to ask a grown up to help you to cut into halves and quarters such as an apple or a pizza.

Fold a piece of paper into halves and then quarters. Can you label the parts?

Splitting things into thirds (3 equal pieces) is harder but you could have a go. Try using a rectangle drawn on a piece of paper. How would you split a circle into thirds? How about a square? Think carefully.



Find other things to split into $\frac{1}{2}$, $\frac{1}{4}$ and $\frac{1}{3}$

For example you could use playdough, chocolate, fruit. LEGO etc Remember that the parts need to be **EQUAL**.

Reading Follow-up to Duck's Ditty – comprehension/ understanding

On Friday we asked you to copy out the poem Duck's Ditty. The attached questions relate to that poem.

Now choose one of the topic activities

Have a lovely day

The year 2 team