

### Key Vocabulary: History

**ancient** – from a long time ago, or having lasted a long time.

**Chronological** – following the order in which a series of events happened.

**Civilization**– A group of people with their own languages and way of life.

**Culture** - the way that people live, and food, clothing, language and celebrations are all a part of culture

**Democracy** – describes a form of government. Made from two Greek words that mean “rule by the people”.

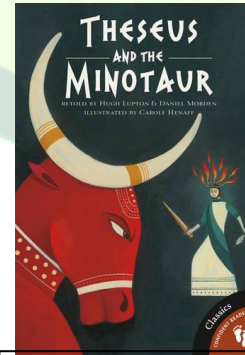
**Legacy** – is something that is handed down from one period of time to another period of time for instance, a way of doing something.



Parthenon, Athens



Mount Olympus



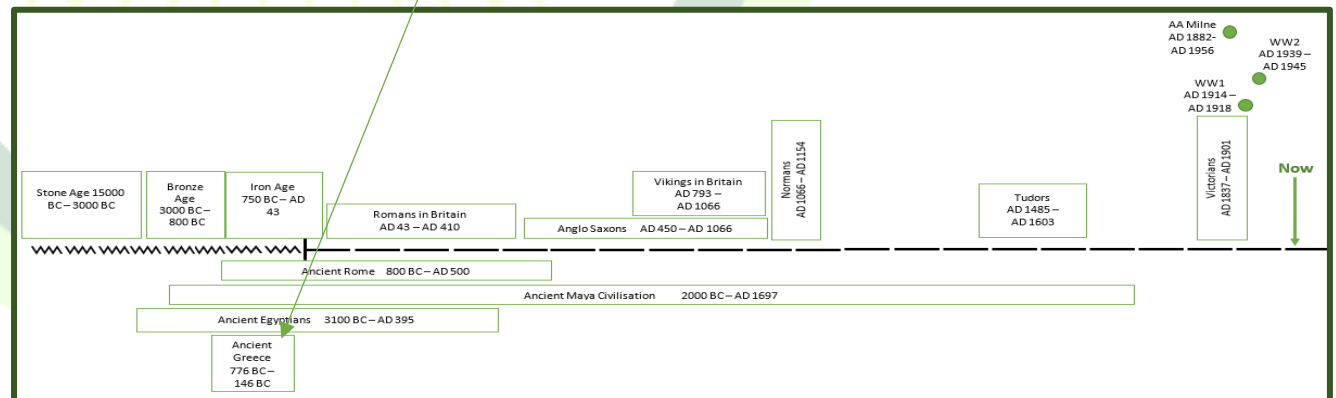
Texts: Greek myths

Theseus and the Minotaur.

Pandora's Box.

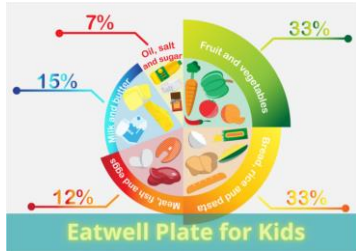


### Timeline



# DT

## Food and Nutrition



A healthy balanced plate

Greek Salad

### Techniques

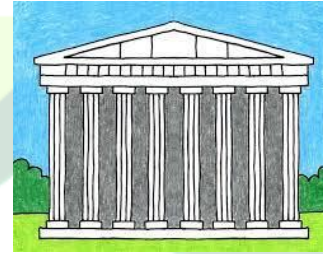
Chop, mash, whisk, crush,

### Vocabulary

hygiene, nutrition, energy, appearance, texture

# Art

## Drawing pots



## 3D sculpture – Greek clay



Artist – Claris Cliff

### Key Vocabulary:

Tone, observe, smudge, form, proportion

### Shading



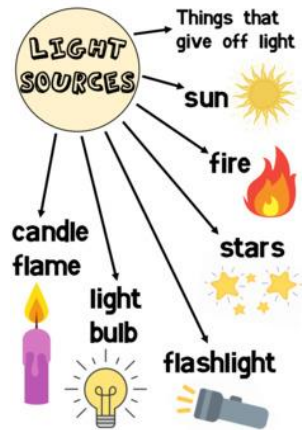
Dark

light

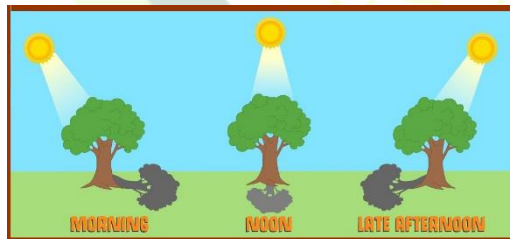
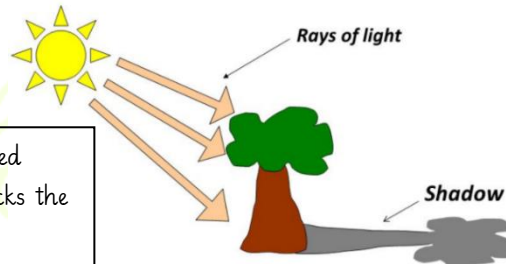


# Science

## Light



Shadows are formed when an object blocks the light



### Key vocabulary

**Source**- something that makes light, e.g. the sun, a torch

**Shadow**- when a solid object blocks the light.

**Reflect**- When light from an object is reflected by a surface, it changes direction. It bounces off the surface.

Transparent	Translucent	Opaque
<ul style="list-style-type: none"> <li>✓ Allows all or most light to travel through.</li> <li>✓ It's possible to see clearly through transparent materials.</li> </ul>	<ul style="list-style-type: none"> <li>✓ Allows some light to pass through.</li> <li>✗ It's not possible to see through translucent materials.</li> </ul>	<ul style="list-style-type: none"> <li>✗ Blocks all the light passing through.</li> <li>✗ It's not possible to see through opaque materials.</li> </ul>